



Globe (Melbourne to Washington) 1995

Globo Tour | Travel Works on Paper by Sidney Lawrence

June 4 – July 16, 2015

Coffee tour with the artist Saturday, June 20, 10–11 am.

University of California Washington Center | Alcove Gallery



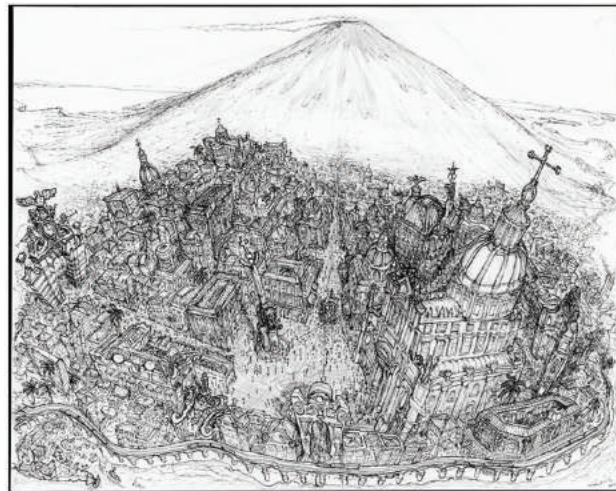
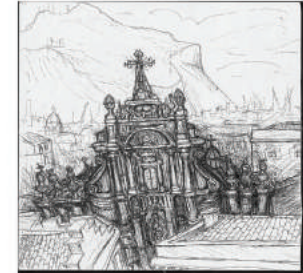
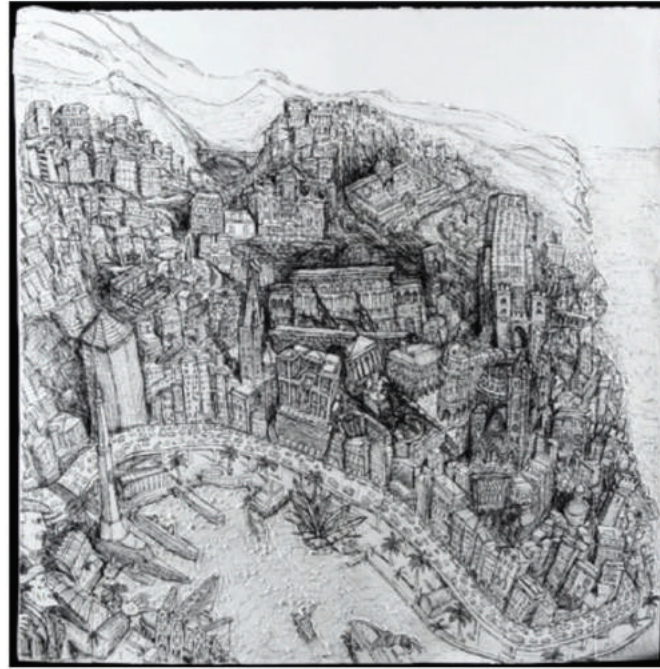
Venice Adrift 2015

University of California Washington Center | Alcove Gallery
1608 Rhode Island Ave at Scott Circle, Washington, DC

Open daily 9 to 6 — Weekend entry by door buzzer
UCDC.edu

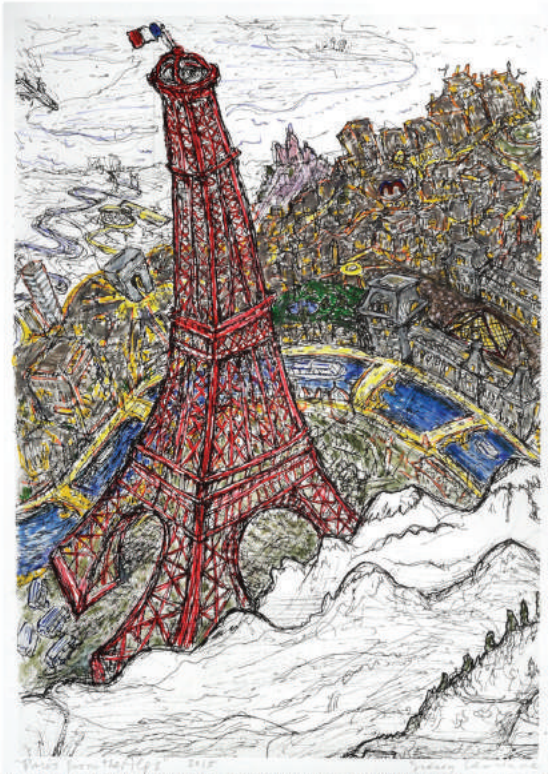


ITALY



Clockwise (from top left): Explorer, Reader, Genoa with Tourists, Pantheon, Palermo Church, Palio Horserace/Siena, Sicily with Cities, Catania & Etna, Self-Portrait with the Bay of Naples (see also Venice Adrift)

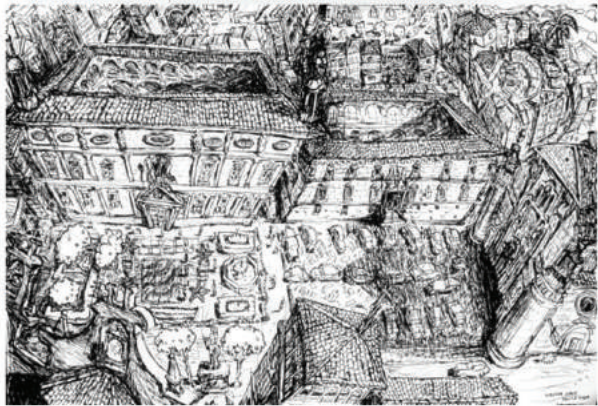
Other Europe



SOLD



SOLD



NFS



NFS

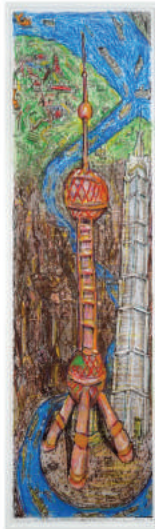


Clockwise (from top left): Paris from the Alps, Berlin, Budapest Bridge, August Twilight—Copenhagen, Copenhagen with Elsinore, Buddha by Window—Copenhagen, Hagia Sofia/Istanbul, Town Square/Ubeda/Spain

AFRICA



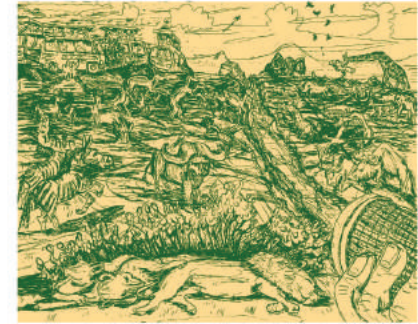
3 of 5 prints sold



NFS



sold



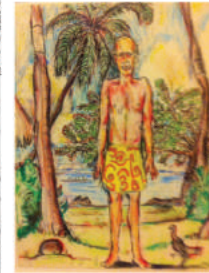
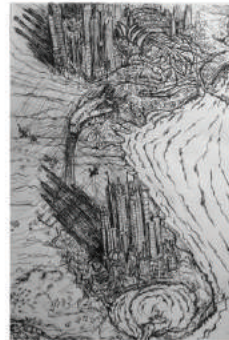
LATIN AMERICA



AUSTRALIA/OCEANIA



sold



See also "Globe (Melbourne to Washington)" opening page

SEVERAL LOCATIONS



Clockwise (from top left): Red Buddha, Shanghai Tower, Ubud & Bali, Fez Out There, Kenya Dawn, Sidney's Excellent Adventures, Tahitian Tom, Sydney to Melbourne, Bogotá & Commentary, Paper version of Bogotá Violencia

“When I travel to a foreign country and look around, everything seems transfixing, triply fascinating, and I lose track of time. Making art about all this helps me process these places.”

Sidney Lawrence, a San Francisco native who studied art history at U.C. Berkeley (BA) and U.C. Davis (MA), came to the Nation’s Capital as a summer intern in 1974 and soon landed a long-term job as the Hirshhorn Museum’s public information officer, launching a DC art career, as well, in the 1980s. This is his second show at UCDC.

Explorer 2014 Mixed-media painting, 23 x 23 in, plus plumage \$850
Reader 2014 Mixed-media relief on wood, 12 x 9 x 3 ½ in. \$250

CHECKLIST

To inquire about a purchase, please email sidneylawrence@earthlink.net or call 202-246-6963. For a career overview visit sidneylawrenceart.com. All works are framed. Dimensions are for the image only (height-width)

ITALY

Venice Adrift 2015 Mixed-media on inkjet print 28 x 18 in. \$550
Pantheon 2015 Ink on paper 8 ¼ x 11 ¼ in. \$250
Palio Horserace, Siena (1992) 2015 Inkjet print 14 x 11 in.* \$300
Catania & Etna 2012 Ink and graphite on paper 23 x 30 in. \$700
Palermo Church 2011 Ink on paper 12 x 12 ½ in. \$350
Sicily with Cities 2010 Ink on paper 12 x 17 ½ in. \$250
Genoa with Tourists 2009 Ink on paper (collaged) 31 x 32 in. \$900
Self-Portrait with the Bay of Naples 2003 Mixed-media on paperboard 46 x 38 in. Lent by Al and Ann La Porta, Washington NFS

OTHER EUROPE

Paris from the Alps 2015 Mixed media on inkjet print 29 x 17 in. \$550
Budapest Bridge (1995) 2015 Inkjet print 14 x 11 in.* \$300
Copenhagen (with Elsinore) 2015 Inkjet print 14 x 11 in. \$300 ●
Buddha by Window—Copenhagen 2013 Ink on paper 14 x 11 in. \$325 ●
Berlin 2012 Limited-edition inkjet print 24 x 18 in. \$500
House & Dunes, Denmark 2013 Acrylic on paper
 Lent by Bruce and Patty Danver, Alexandria 11 x 14 in. NFS
August Twilight (duo in Copenhagen cafe) 2009
 Ink and oil pastel on paper 12 x 3 ½ in. \$250
Ubeda Town Square, Spain 2008 Inkjet print 13 ½ x 20 in. \$400
Hagia Sofia (Istanbul) 2006 Ink on paper 6 x 6 ½ in.
 Lent by Doug and Maureen Robinson, Bethesda NFS

AFRICA

Fez Out There 2015 Inkjet print 14 x 11 in.* \$300 ●
Kenya Dawn 2015 Inkjet print 14 ½ x 18 in.* \$350

ASIA

Red Buddha (Kyoto) 2015 Inkjet print, edition of 5 19 x 15 in.* \$400 1 2 3
Shanghai Tower 2009 Oil pastel, colored pencil & inkjet on paper 23 x 6 ½ in. \$450
Ubud & Bali 2007 Ink on paper 17 x 11 ½ in.
 Lent by Andy Unger and Marilyn Horrom, Rockville NFS

AUSTRALIA/OCEANIA

Sydney to Melbourne 2007 Ink on paper 17 ¾ x 12 in. \$450
Globe (Melbourne to Washington) 1995 Ink on paper 18 x 12 ½ in. \$450
Tahitian Tom 1984 Ink and oil pastel on paper 14 x 11 in. \$300

LATIN AMERICA

Bogotá Violencia (1988) 2015 15 x 25 in.
 Inkjet reproduction of a 3 ½ by 4 ½ foot mixed-media wall construction, with ink and watercolor, collection of Juan Manuel Echavarría, New York and Bogotá* \$200
Bogotá View & Commentary (1988) 2008
 Page from Ink Cities, hand-colored (full booklet also available) 8 ½ x 5 ½ in. \$75 ●

SEVERAL PLACES

Sidney’s Excellent Adventures 2015
 Six photo cutouts of paintings and wall pieces 1985-2008 (various collections) inspired by India, Poland, Morocco, Australia, Kenya and Papua New Guinea, with text, pins and napkin paper \$200

COLUMN WRAPAROUNDS (unframed)

UAL Screen Globe & Alps Vista with Elephant
 Digitally stretched images, 18 x 90 in. best offer

* Print produced by Koslow Fine Arts, Herndon, Va.