

# VARIETY SHOW

Works by Sidney Lawrence



● *Skippy, Come!*, 2016

October 13–December 8, 2016

Coffee tour with the artist, Saturday, October 29, 10-11 am

---

University of California Washington Center

1608 Rhode Island Avenue at Scott Circle, Washington, DC



This show is about  
the variety of adventure —  
outdoors, in the studio,  
in the world, and privately,  
in my head.

I try to pay attention  
and hope the results  
speak to you.

SIDNEY LAWRENCE has been active as an artist in Washington since the 1980s. A San Francisco native, he studied art history at U.C. Berkeley (BA) and U.C. Davis (MA). In 1975, after a summer internship at what is now the Smithsonian American Art Museum, he landed a long-term position as the Hirshhorn Museum's public information officer. Lawrence's works are in both local and national collections. This is his third show at UCDC.



**Above:**  
*World (after del Piombo)*, 2015.  
Photo: Gregory Staley

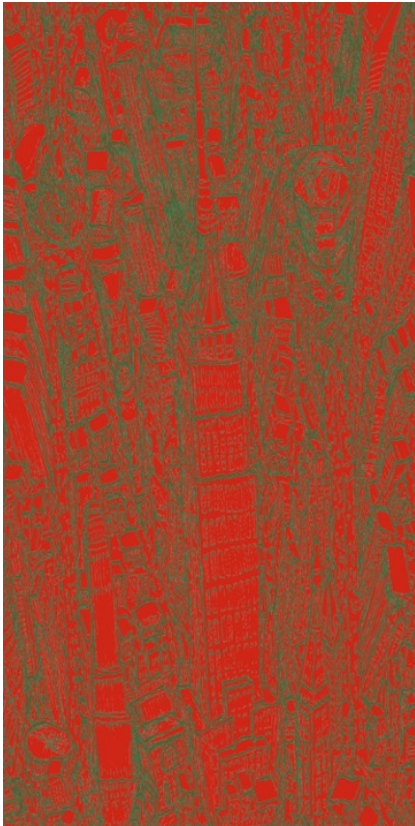
**Right:**  
*Brasília*, 2016.  
Photo: Gregory Staley



SIDNEY  
LAWRENCE'S  
VARIETY SHOW  
(sampling of works)  
Dec 8 closing date

Above: "Sad End" (acrylic)

Below: "Hot Town" (color inkjet print, ed. of 5)

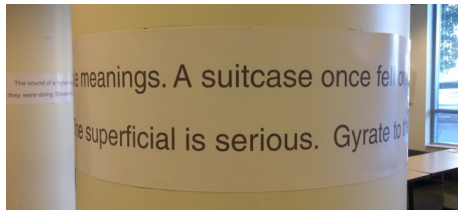


"Lucian Freud's Broken Nose" (oil)

"Windy City"-detail (limited edition inkjet print)



Below "Private Self-Portrait (after Holzer)" (text installation)



## CHECKLIST

Dimensions are for the image only (height, width, depth). All works are framed and ready to hang. To inquire about a purchase, please email [sidneylawrence@earthlink.net](mailto:sidneylawrence@earthlink.net) or call/text 202-246-6963. An updated checklist is online at [sidneylawrenceart.com](http://sidneylawrenceart.com)

---

### Portraits

- **Man in Beret** 2015  
Oil on wood, 19¼ x 17 in. \$450
- **Shared Destiny** 2015  
Oil on canvasboard and wood, 10 x 26 in.  
Lent by Nora Cameron NFS
- **World (after del Piombo)** 2015  
Oil on canvas, 23 x 19 in. \$750
- **Hales and Her Parents (after Bellini)** 2016  
Oil on gessoboard, 18¼ x 14¼ in.  
Lent by Joey and Logan Ferguson NFS
- **Lucian Freud's Broken Nose** 2016  
Oil on canvasboard, 12¾ x 10 in. \$500
- **Becoming Giacometti** 2016  
Oilstick on paper, 10¼ x 8 in. \$600
- **Private Self-Portrait (after Holzer)** 2016  
Text on paper strips \$200

### Nature

- **Toilers** 2014  
Computer-altered vintage photo  
30 x 16 in. \$300
- **Wave** 2014/16  
Mixed-media, 21 x 13 x 9 in. \$650
- **Danish Wind** 2015  
Acrylic on paper, 14 x 9 in. \$450
- **Clothesline** 2015  
Pen and ink, 12½ x 10½ in. \$350
- **Skippy, Come!** 2016  
Acrylic on paper, 9½ x 11¾ \$450
- **Dog Sniffing Pansies** 2016  
Oil on canvasboard, 18 x 15 in. \$550
- **Sad End** 2015  
Acrylic on paper, 5½ x 8½ in. \$350
- **Exterior** 2004/16  
Pen and ink, 16½ x 14 in. \$525
- **Inner Pit Bull** 2004/16  
Pen and ink, 16½ x 14 in. \$525

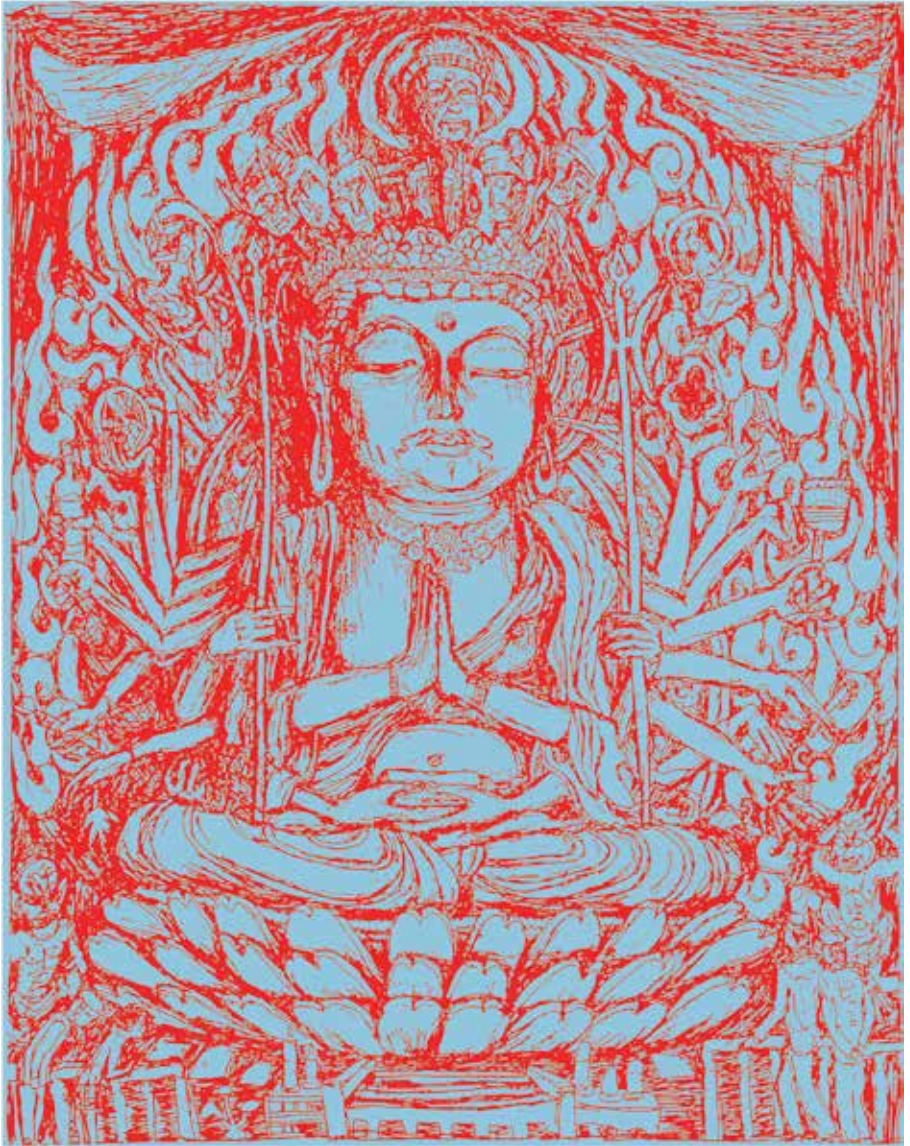
### Cities

- **Sunny Day of Gloom** 2005/16  
Inkjet print with graphite and pen-and-ink, 10 ½ x 19 ¾ in. \$450
- **Windy City** 2008  
Inkjet print, 32 x 22 in. \$450
- **Brasilia** 2016  
Mixed media, 28 x 30 x 1½ in. \$650
- **Kite Flyer** 2016  
Inkjet print with pen and ink,  
10 x 20 in. \$300
- ● **Christ Church Georgetown**  
Inkjet print, 14 x 11 in. \$250
- ● **Kesher Israel**  
Inkjet print, 11 x 14 in. \$250
- **Mt. Zion Methodist Church**  
Inkjet print, 11 x 14 in. \$250
- **Mother San Francisco**  
Mixed media, 16 x 10½ in. NFS
- **Empire of the Future** 2016  
Inkjet print, 38½ x 7 in. \$300

### Color Dreams\*

- **Hot Town** 2016  
Inkjet print, 20 x 10 in. \$300
- **Hot Streets** 2016  
Inkjet print, 20 x 10 in. \$300
- **The City on Fire** 2016  
Inkjet print, 26½ x 19¼ in. \$550
- **Teen Nocturne** 2016  
Inkjet print (Deco frame),  
11¾ x 17¼ in. \$475
- **Sky Buddha** 2016  
Inkjet print, 19 x 15 in. \$400
- **Chocolate Mint** 2016  
Inkjet print, 15 X 19 in. \$400
- **Teatro** 2016  
Inkjet print, 19 x 15 in. \$400

\*Colors developed in collaboration with Koslow Fine Arts (printer), Herndon, Va.



● *Sky Buddha*, 2016.  
Photo: Koslow Fine Arts

**University of California Washington Center** | Alcove Gallery  
Open daily 9 to 6 | Weekend entry by door buzzer  
[ucdc.com](http://ucdc.com)